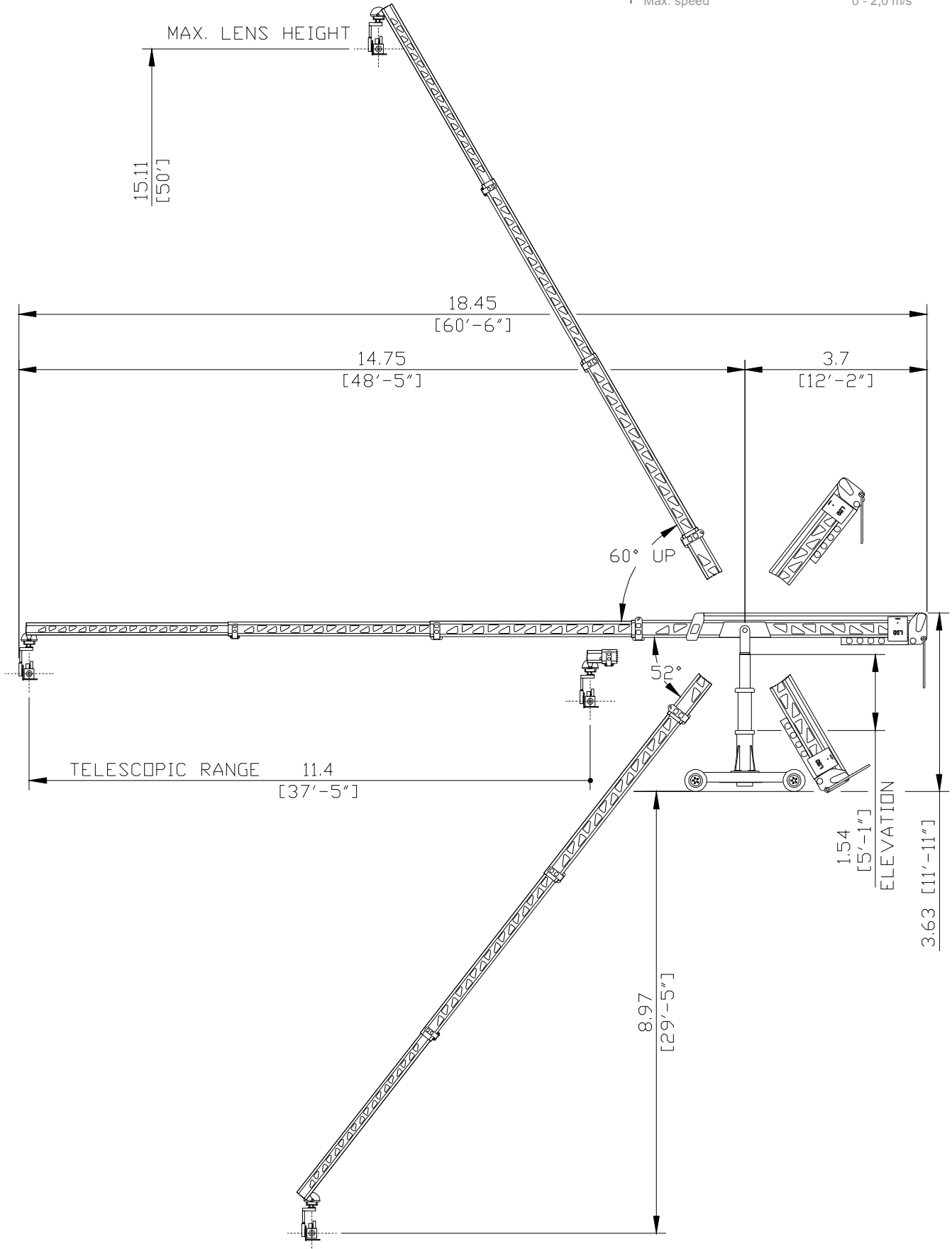


# SUPERTECHNO 50

Max. lens height: 15,1 m / 50 ft.  
Max. telescopic extent: 11,4 m / 37 ft.  
Max. camera weight: 35 kg / 80 lb  
Total weight: 2300 kg / 5100 lb

Max. speed: 0 - 2,0 m/s



# SUPERTECHNO 50

Max. lens height:  
Max. telescopic extent:  
Max. camera weight:  
Total weight:  
Max. speed

15,1 m / 50 ft.  
11,4 m / 37 ft.  
35 kg / 80 lb  
2300 kg / 5100 lb  
0 - 2,0 m/s

